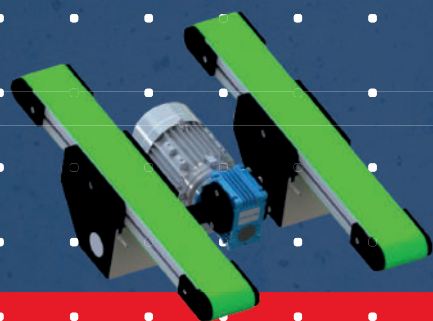




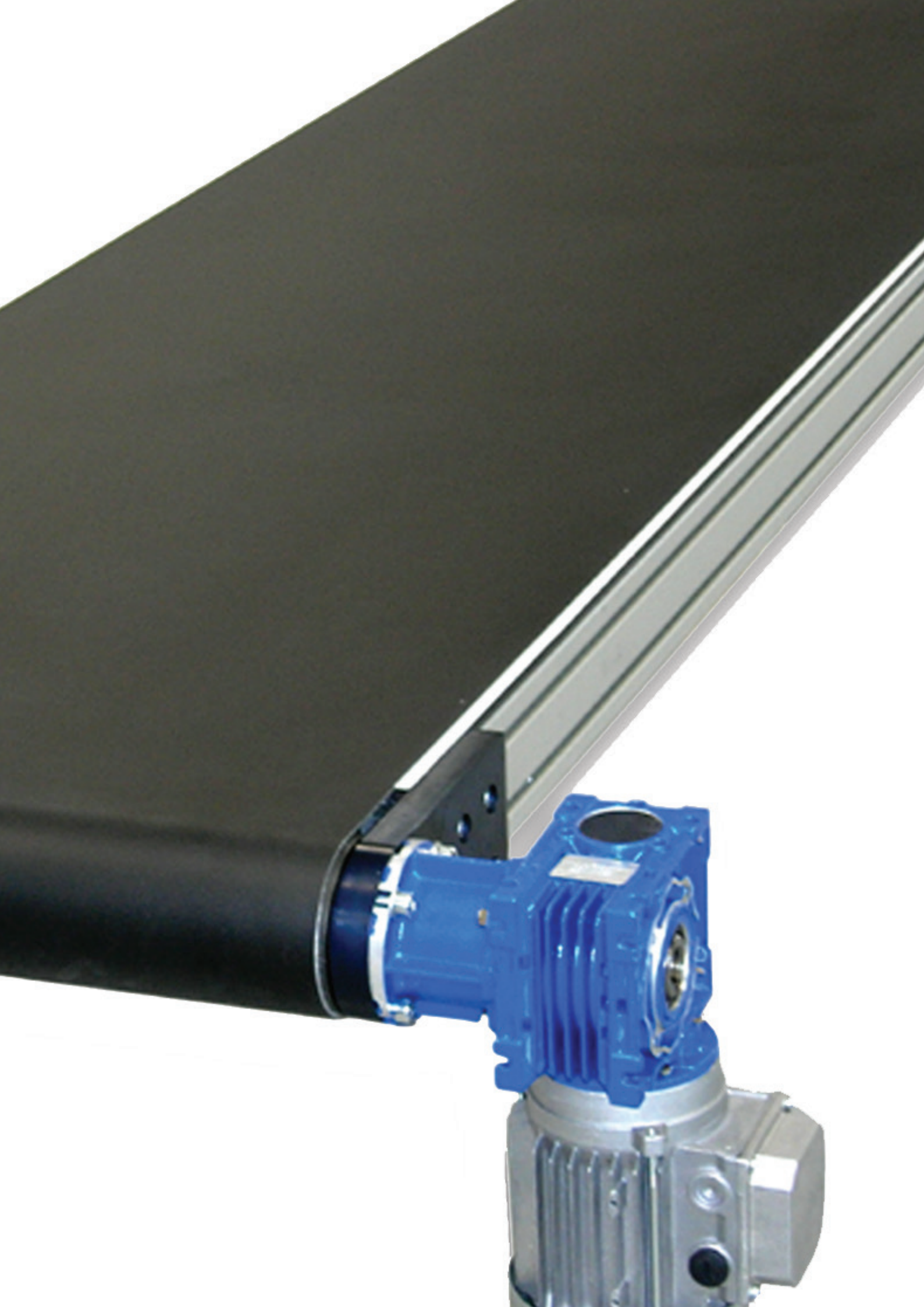
# Technical sheet

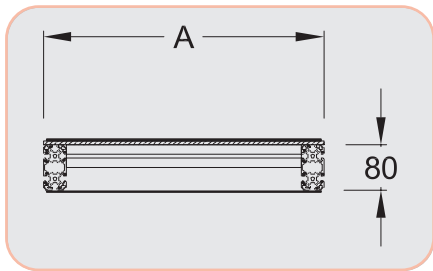
## Flat Belt conveyor C90



# CONVEYOR 90 FLAT BELT







# Conveyor 90

Flat belt  
End drive

Widths 500, 600, 700, 800, 1 000 mm

### Technical data

Flat belt conveyor for heavy and bulky components.

- x Drive on extremity drive pulley
- x Steel pulleys with ball bearings
- x Aluminium profile frame

### Dimensions (mm)

- x Width A: 500 - 600 - 700 - 800 - 1 000
- x Length L: 500 to 6 000
- x Width of belt: A - 10
- x Length of belt:  $L_c = (2 \times L) + 300$
- x Length of profile:  $LP = L - 100$

### Plates

- x Plastic 8 mm
- x Stainless steel

### Gear motors

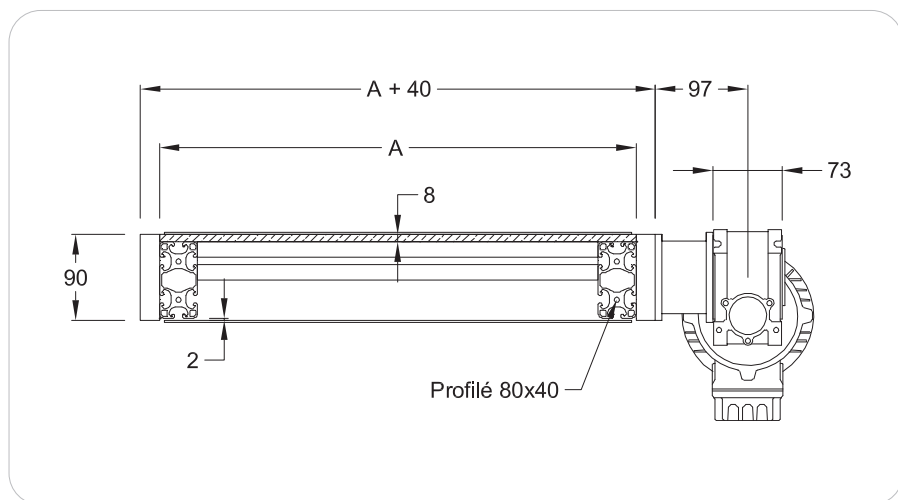
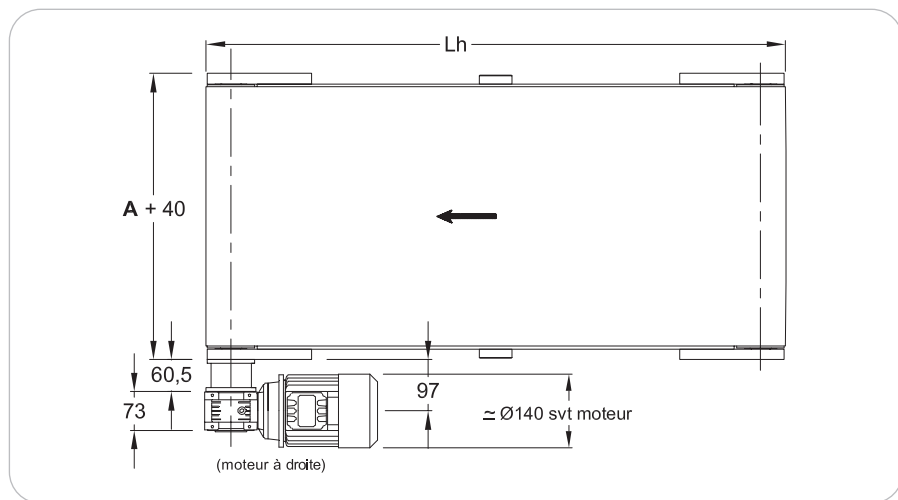
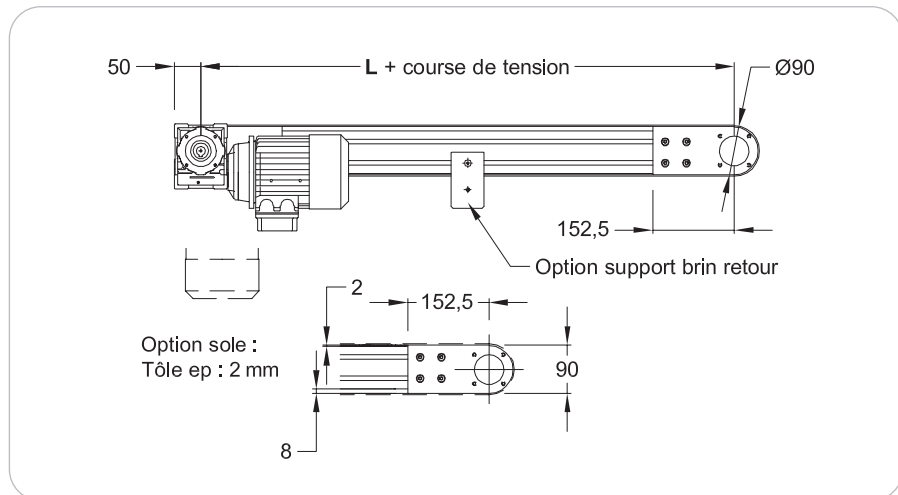
- x 230/400 V Three-phase 50 Hz
- Speed (m/min) +/- 10%:  
4 - 6 - 8 - 10 - 16 - 20 - 26

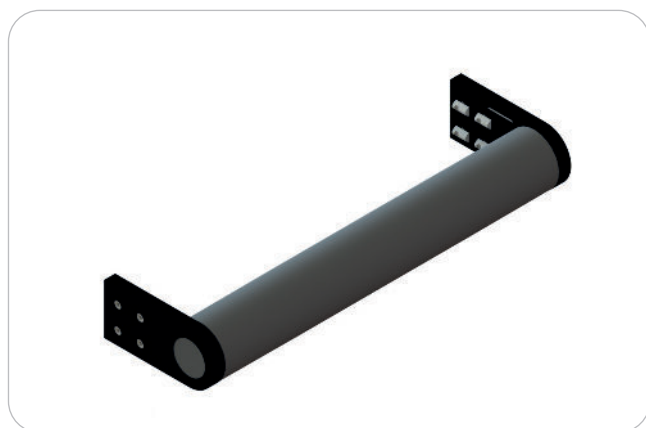
Gear motors data: Page 106

### Belts

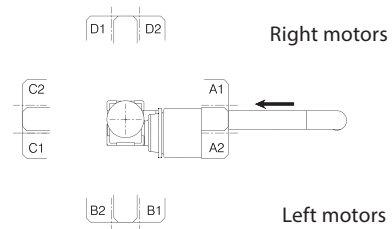
Installation tension: 0,5 % maxi  
Belt data: Page 104

Permissible loads: see loads data page 11.



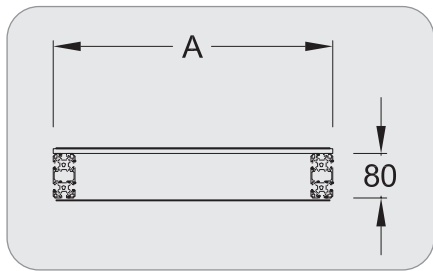


Gear motors positions (see page 106)



Product description/Dimensions	Order unit	Reference
Conveyor 90 Flat belt End drive	1 pce	C XXXX 10 000

(XXXX = Width A of conveyor eg: C 0500 10 000)



## Conveyor 90

Flat belt

End drive, Motor below

Widths 500, 600, 700, 800, 1 000 mm

### Technical data

Flat belt conveyor for heavy and bulky components.

- x Drive of extremity drive pulley by timing belt 10 mm step width 25 mm
- x Steel pulleys with ball bearings
- x Aluminium profile frame

### Dimensions (mm)

- x Pulley diameter: 90
- x Width A: 500 - 600 - 700 - 800 - 1 000
- x Length L: 500 to 6 000
- x Width of belt: A - 10
- x Length of belt:  $L_c = (2 \times L) + 300$

### Plates

- x Plastic 8 mm
- x Stainless steel
- x

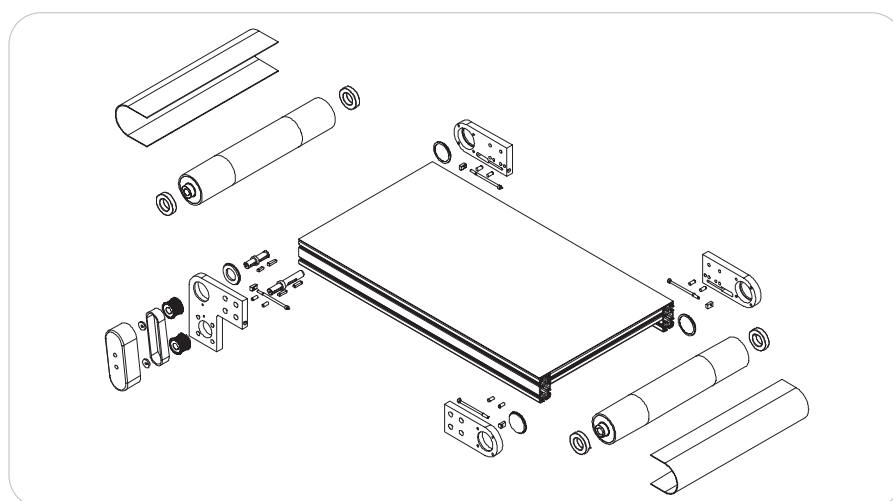
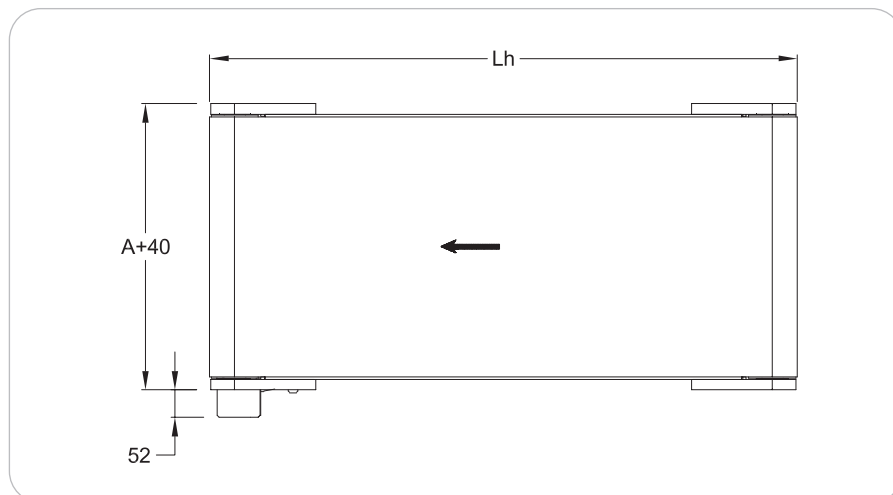
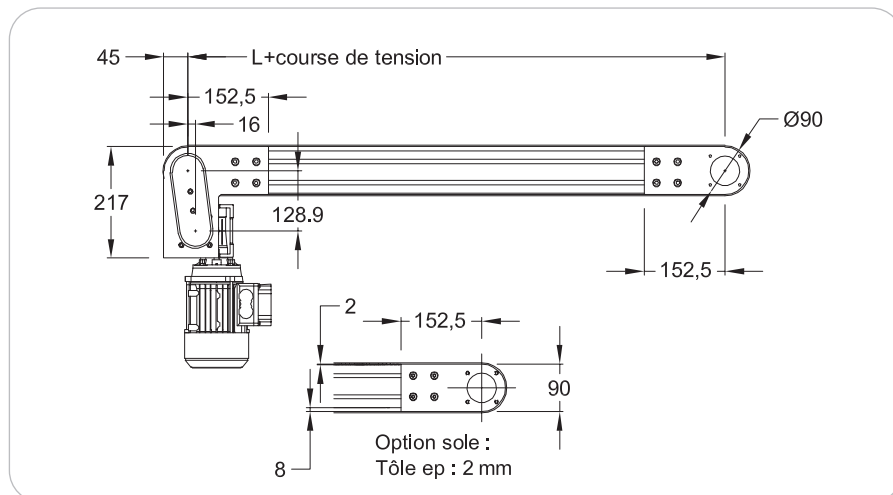
### Gear motors

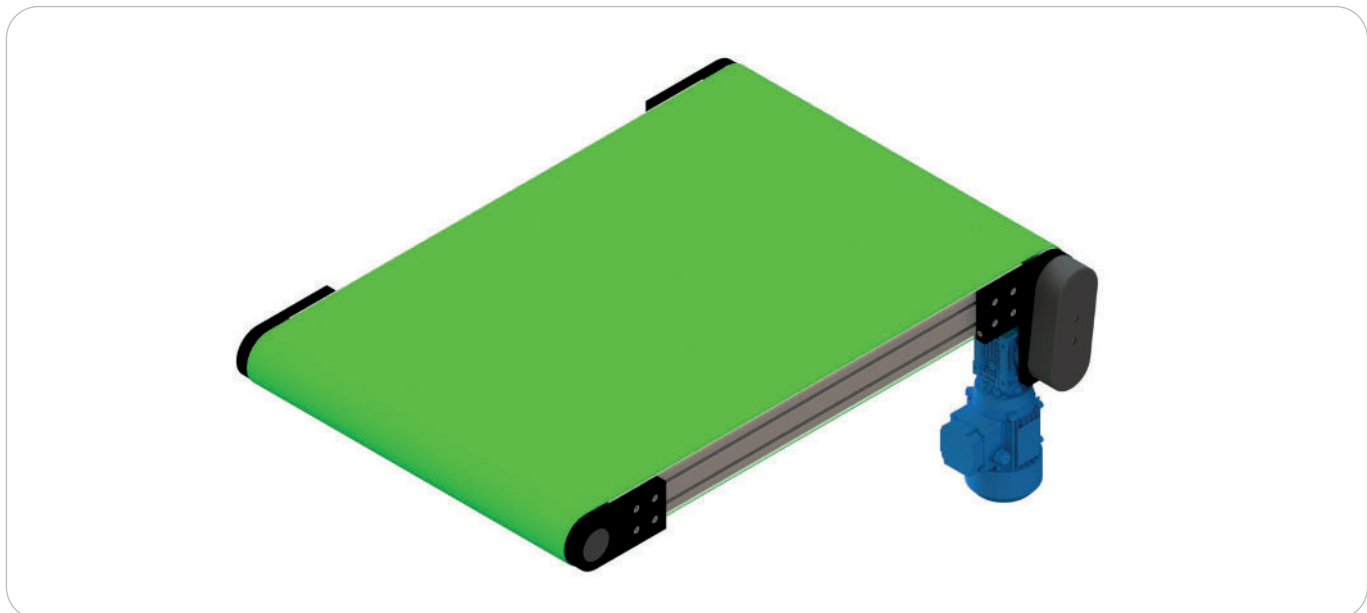
- x 230/400 V three-phase 50 Hz
  - Speed (m/min) +/- 10%:  
4 - 6 - 8 - 10 - 16 - 20 - 26
- Gear motors data: Page 106

### Belts

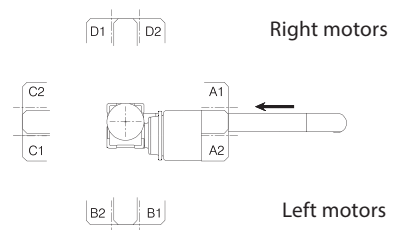
- Installation tension: 0,5 % maxi  
Belt data: Page 104

Permissible loads: see loads data page 11.





Gear motors positions (see page 106)



Product description/Dimensions	Order unit	Reference
Conveyor 90 Flat belt End drive Motor below	1 pce	C XXXX 53 000

(XXXX = Width A of conveyor eg: C 0500 53 000)

# CONVEYOR 90 MOTORIZED DRUM







# Conveyor 90 motorized drum

## Flat belt

### End drive, Motorized drum

Widths 500, 600, 700, 800 mm

#### Technical data

Compact conveyor thanks to the integrated motor in the pulley.

- ✗ Drive on extremity by motorized drum.
- ✗ Aluminium pulley with ball bearings.
- ✗ Aluminium profile frame.

#### Dimensions (mm)

- ✗ Pulley diameter:  $\varnothing 84$
- ✗ Width A: 500, 600, 700, 800
- ✗ Width of belt: 490, 590, 690, 790
- ✗ Length mini :  $A \times 1,2$  mm
- ✗ Length maxi: 4 000
- ✗ Stainless steel or galvanized steel plate thickness 2 mm

#### Gear motors

- ✗ 230/400 V three-phase 50 Hz
- ✗ Speed : 5 - 6 - 7 - 9 - 11 - 14 m/min according to power

Adjustable cable outlet from  $90^\circ$  to  $90^\circ$ .

$L_h = L + \text{tensioning stroke} + 84 + 2 \times \text{belt thickness}$

Space saving thanks to the drum motor

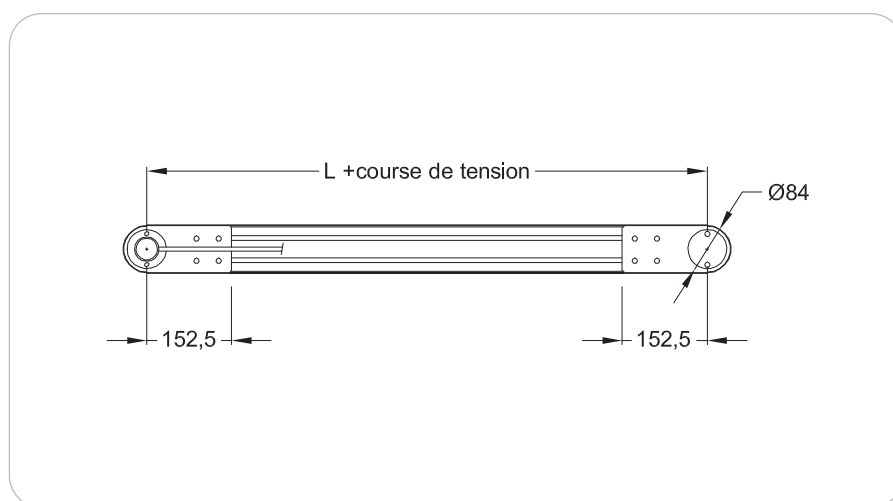
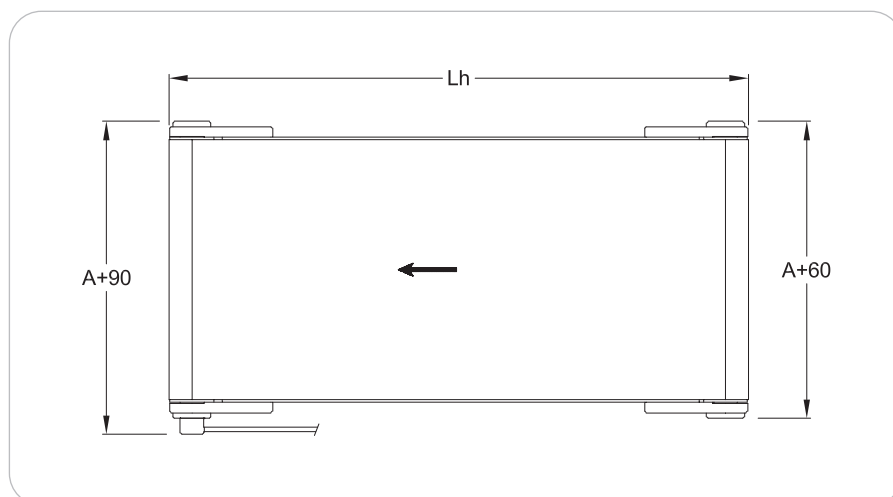
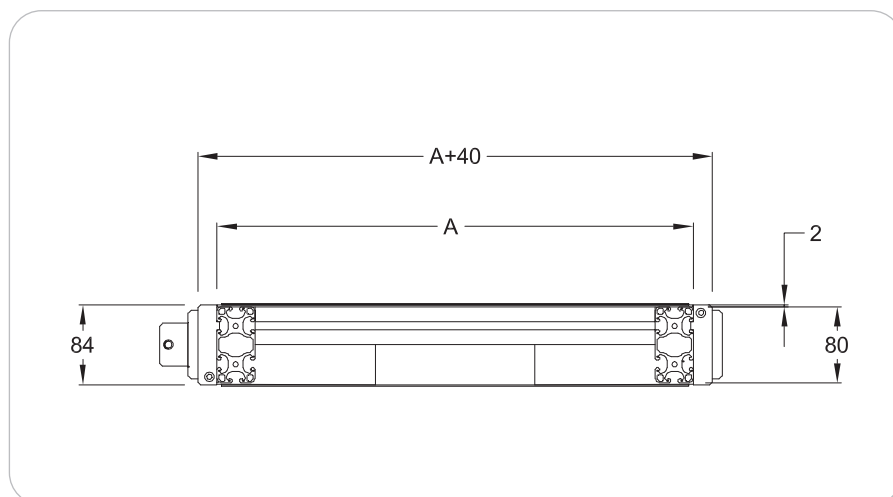


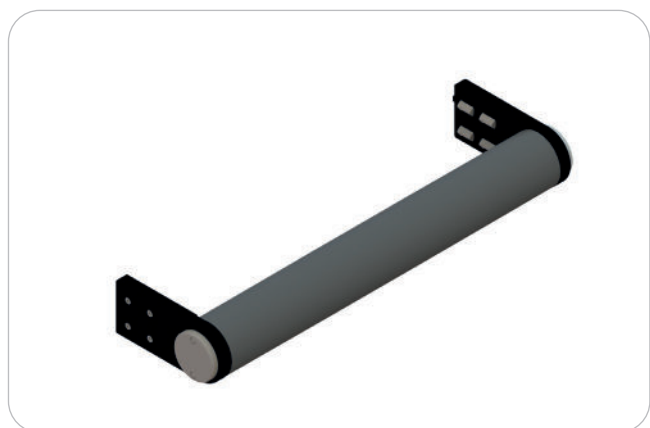
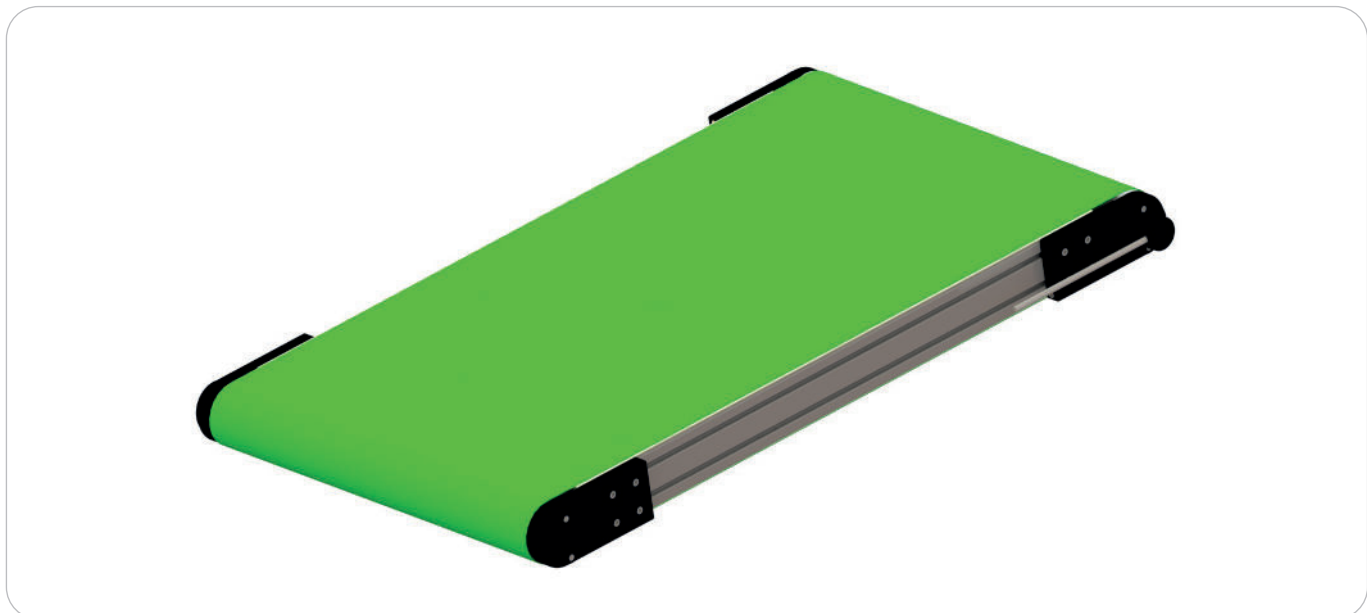
**Do not operate without belt since this may result in damage.**

#### Belts

Belt data: Page 104

Permissible loads: see loads data page 11.

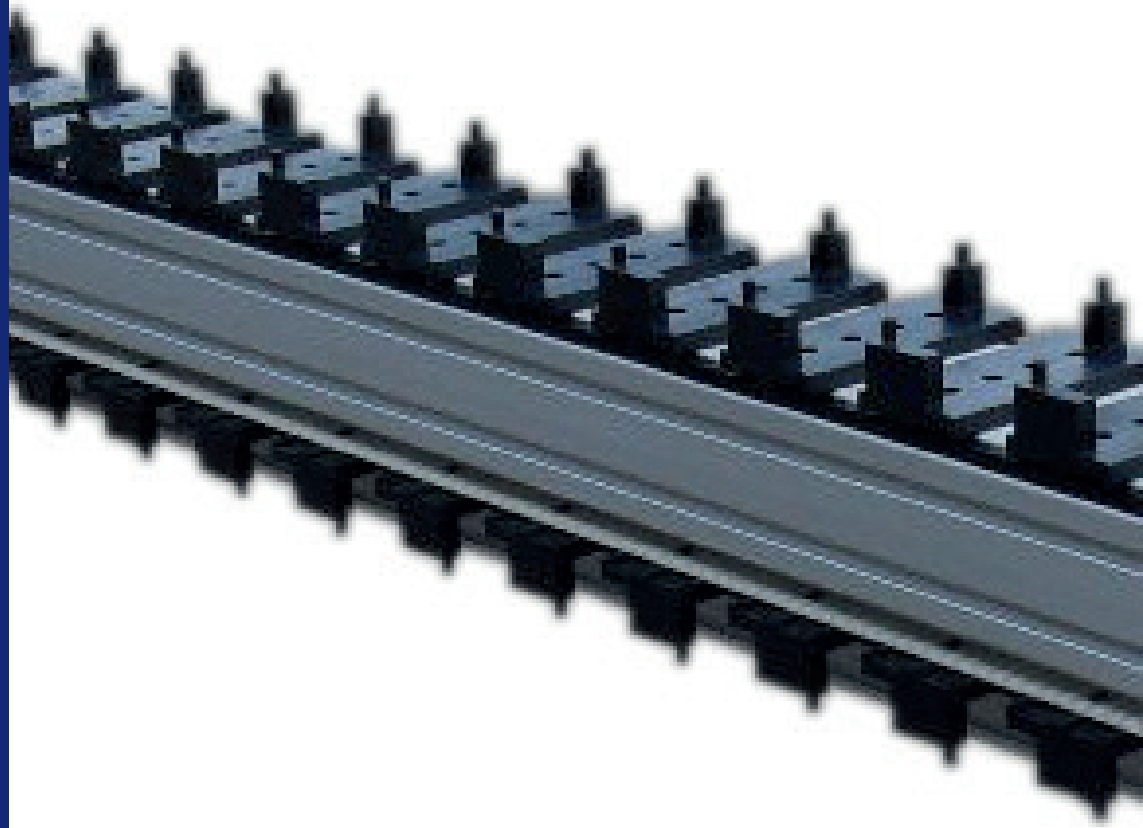




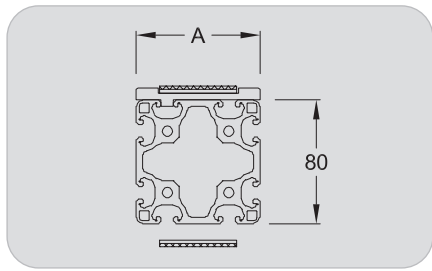
Product description/Dimensions	Order unit	Reference
Conveyor 90 Motorized drum	1 pce	C XXXX 30 000

(XXXX = Width A of conveyor : 500-600-700-800 eg: C.0500.30.000)

# CONVEYOR 90 TIMING BELT







## Conveyor 90

Timing belt (CC)

End drive

Widths 40, 80, 120 mm

### Technical data

Compact conveyor on profiles 8 basis 80 mm, for all kinds of components.

Positive driving belt for heavy loads.

- x Toothed pulleys with ball bearings
- x Guiding belt PA material
- x Timing belt, 10 mm step
- x Option: timing belt 10 mm step with threaded insert which enables to fix workpiece fittings.

### Dimensions (mm)

- x Width A: 40 - 80 - 120
- x Length L: 500 to 6 000
- x Width of belt: 25, 50 and 100
- x Length of belt:  
 $LC = (2 \times L) + 320$
- x Length of profile:  $LP = L - 125$

### Gear motors

- x 230/400 V three-phase
- x Speed (m/min)  $\pm 10\%$ :  
 4 - 6 - 8 - 10 - 16 - 20 - 26

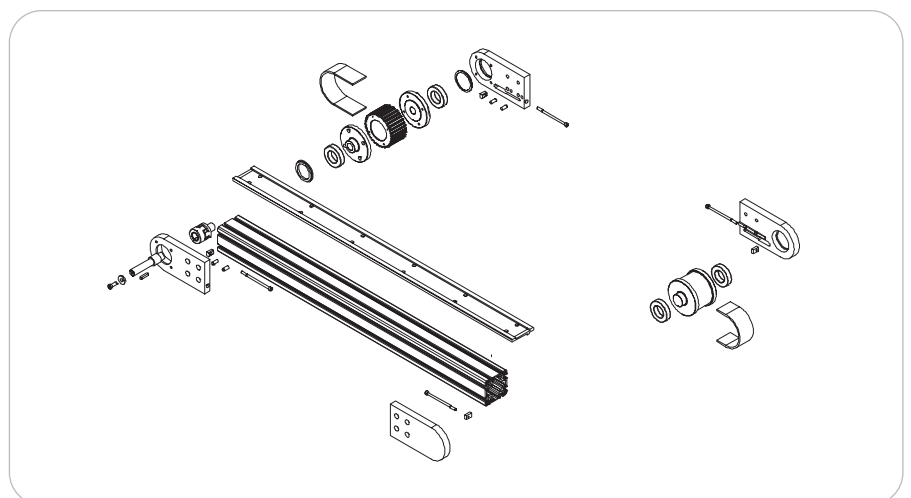
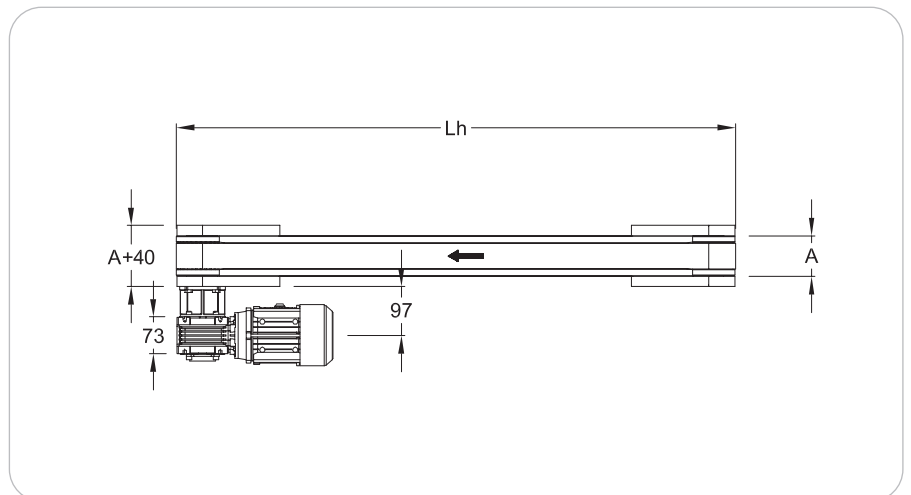
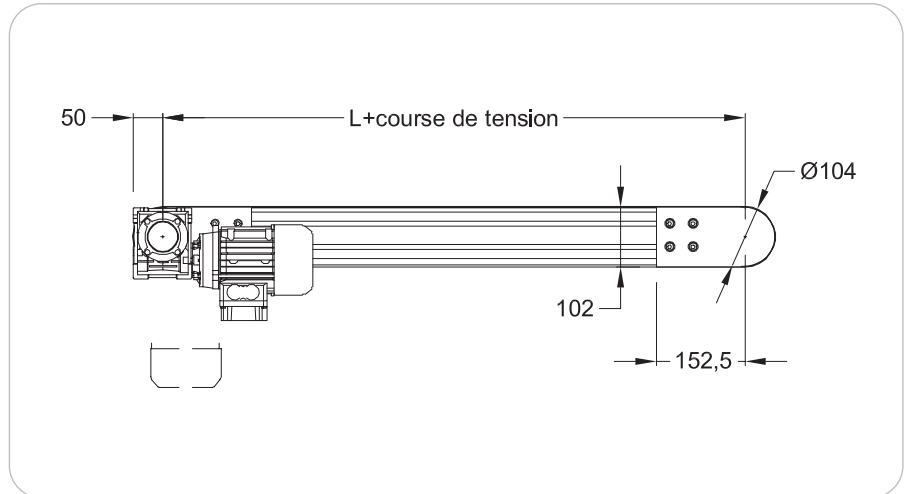
Gear motors data: Page 106

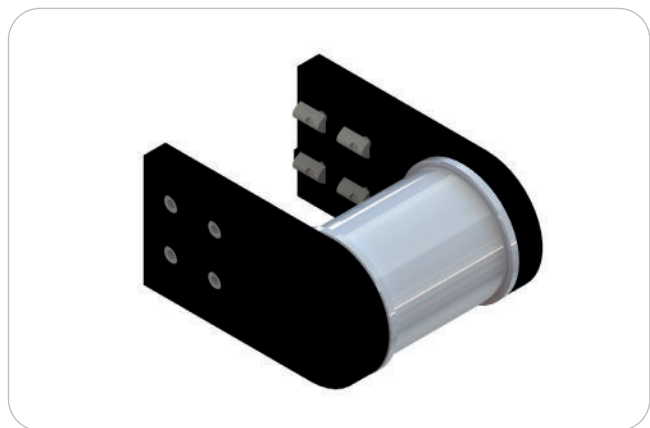
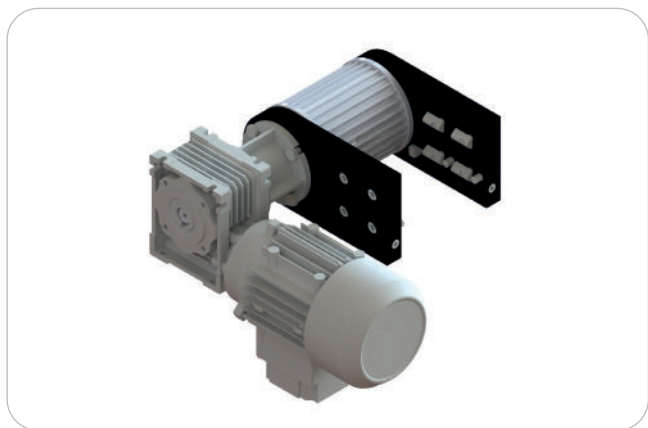
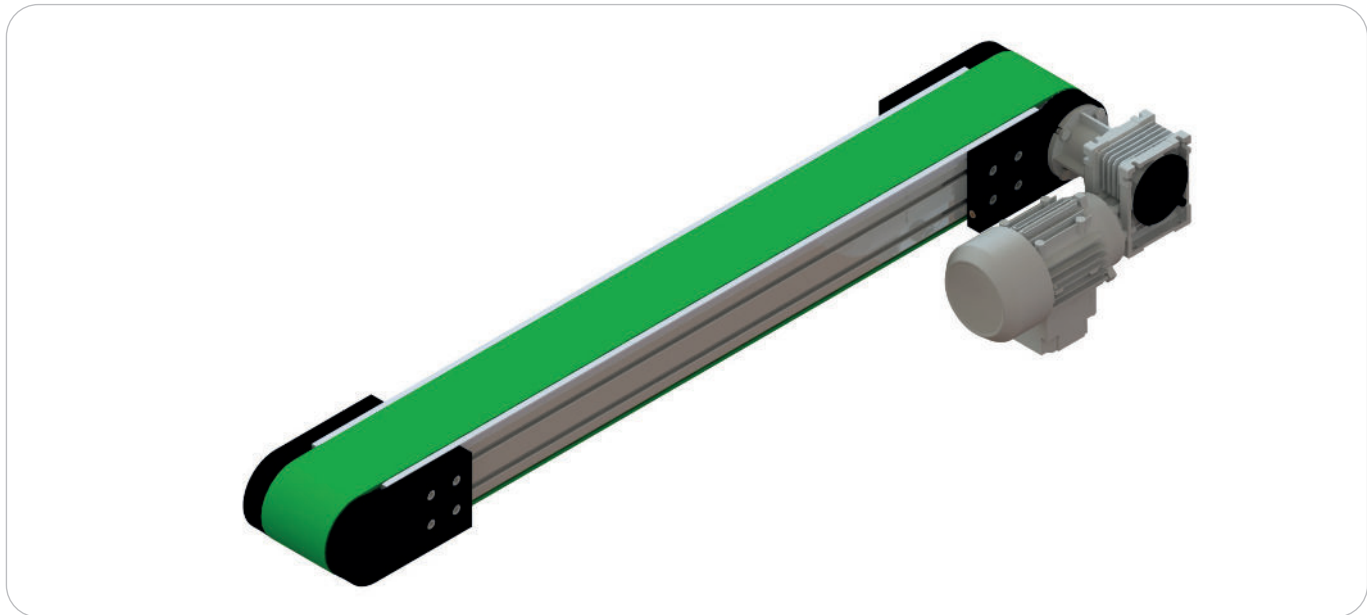
### Belts

Installation tension: 0,1 %

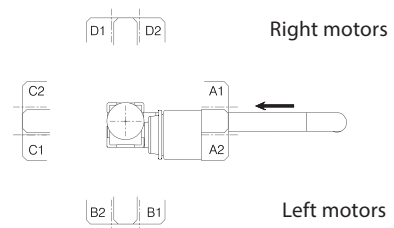
Belt data: Page 104

Permissible loads: see loads data page 11.



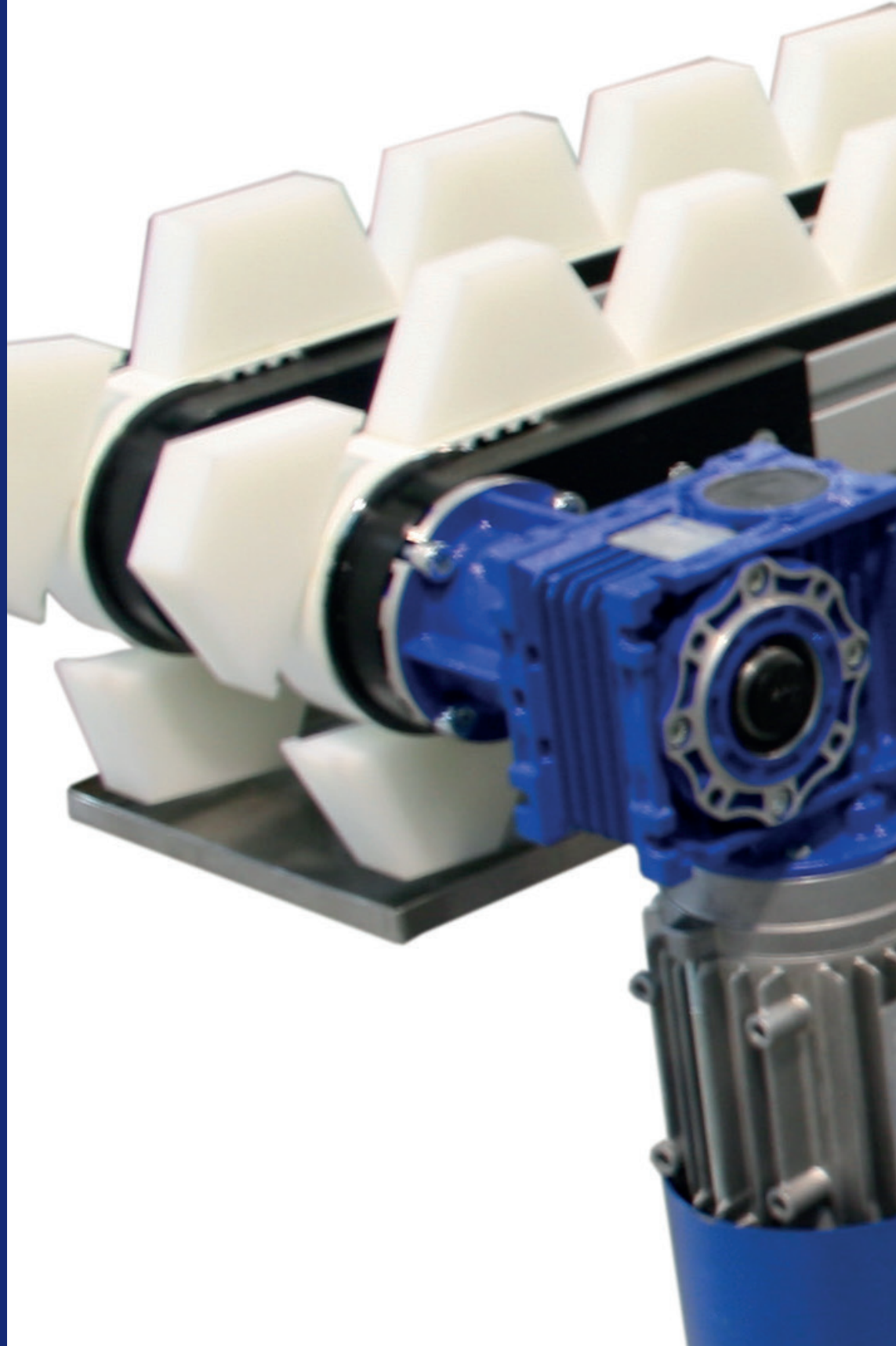


Gear motors positions (see page 106)

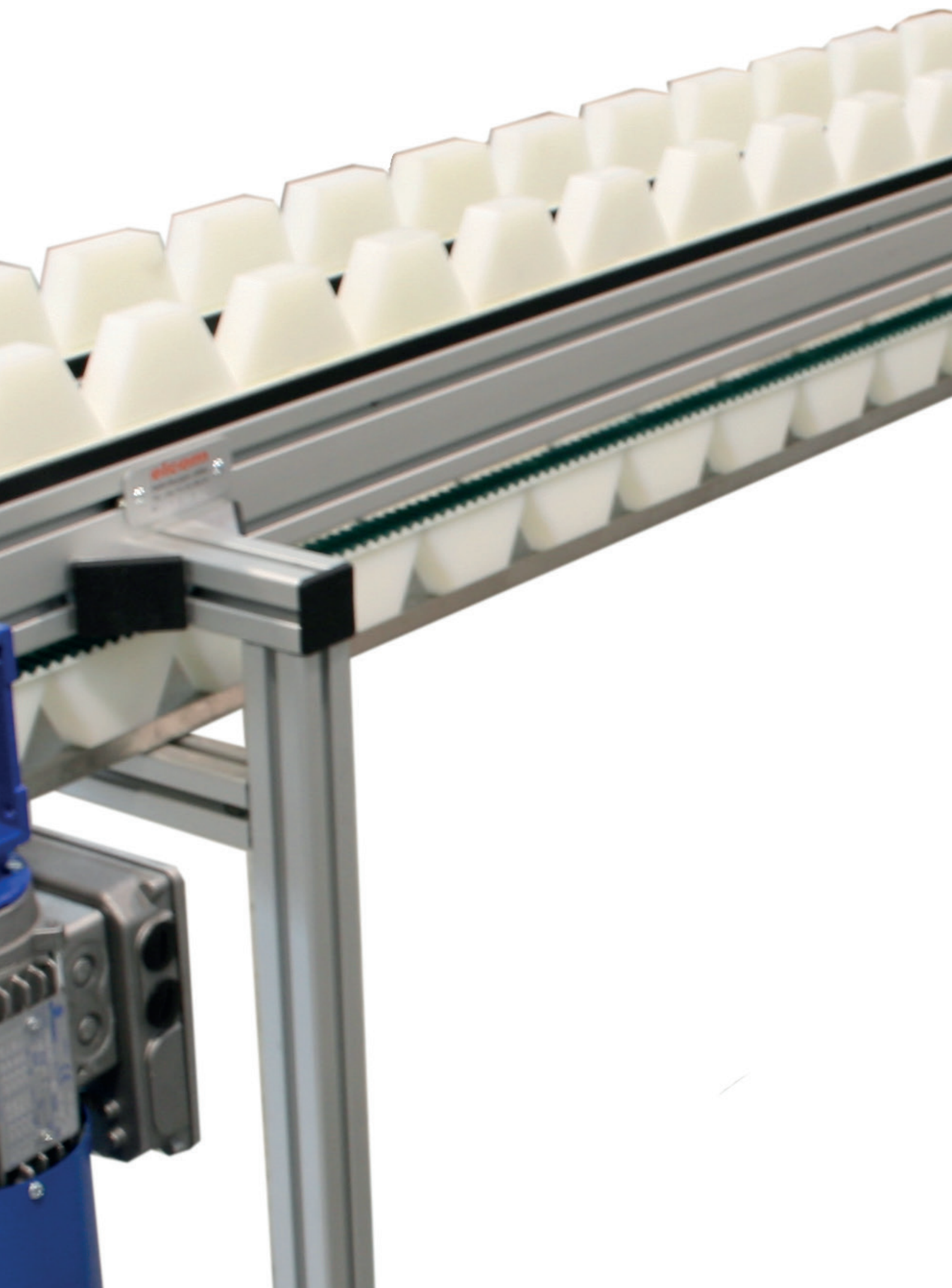


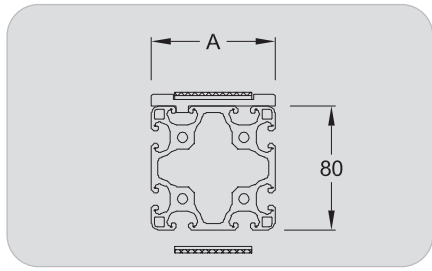
Product description/Dimensions	Order unit	Reference
Conveyor 90 Timing belt End drive 40 mm	1 pce	C 0040 70 000
Conveyor 90 Timing belt End drive 80 mm	1 pce	C 0080 70 000
Conveyor 90 Timing belt End drive 120 mm	1 pce	C 0120 70 000

**CONVEYOR 90 DOUBLE TIMING BELT**









## Conveyor 90

Double timing belt (CC)

End drive

Widths 40, 80, 120 mm

### Technical data

Two parallel timing belt conveyors driven by only one motor, for large components enabling the use of free space.

Positive driving belt for heavy loads.

- x Toothed pulleys with ball bearings
- x Guiding belt PA material
- x Timing belt, 10 mm step
- x Option: timing belt spacing 10 mm with threaded insert which enables to fix workpiece fittings

### Dimensions (mm)

- x Width A: 40 - 80 - 120
- x Length L: 500 to 6 000
- x Width of belt: 25, 50 and 100
- x Length of belt  
 $L_c = (2 \times L) + 320$
- x Length of profile:  $LP = L - 125$

### Gear motors

- x 230/400 V three-phase
- x Speed (m/min)  $\pm 10\%$ :  
 4 - 6 - 8 - 10 - 16 - 20 - 26

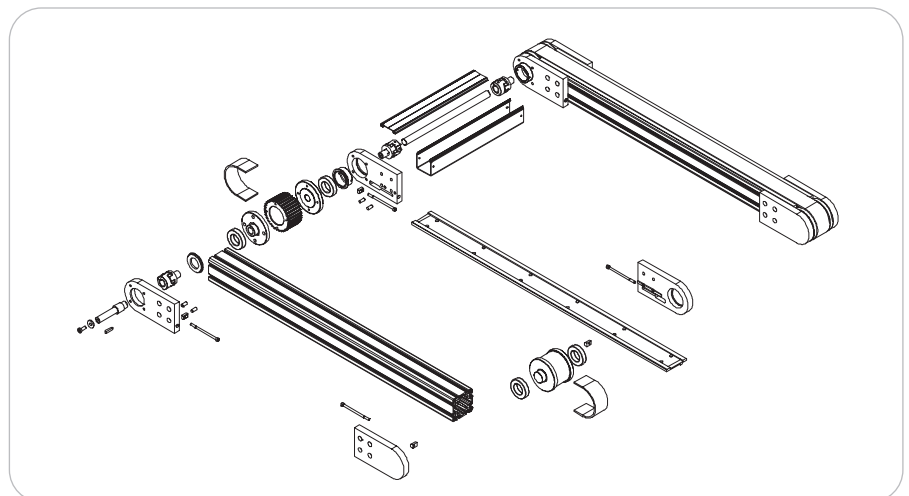
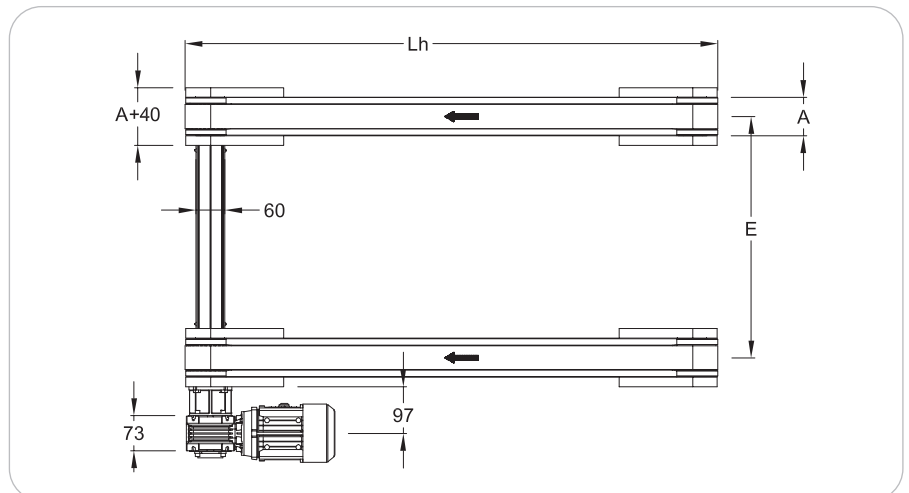
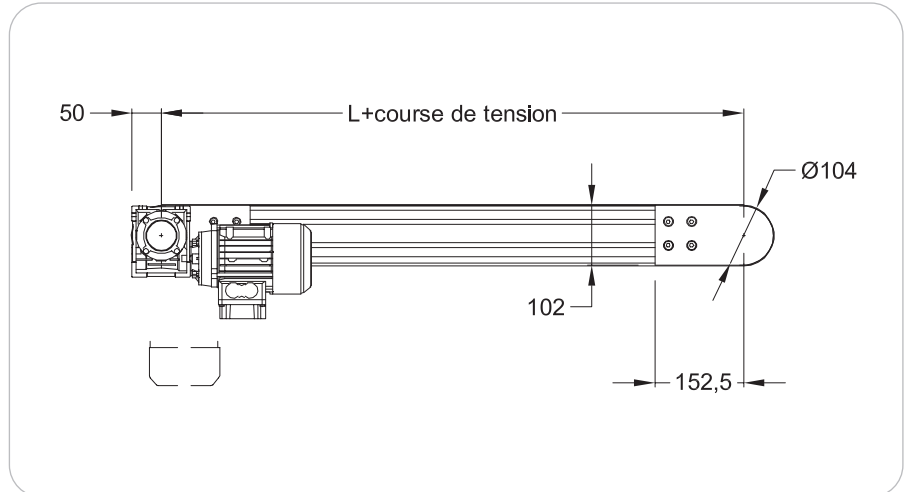
Gear motors data: Page 106

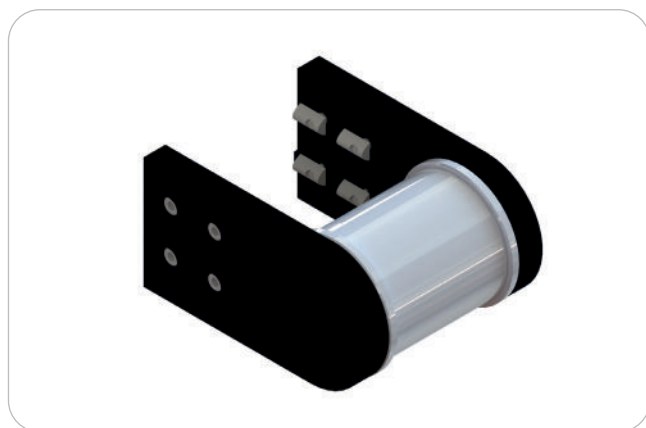
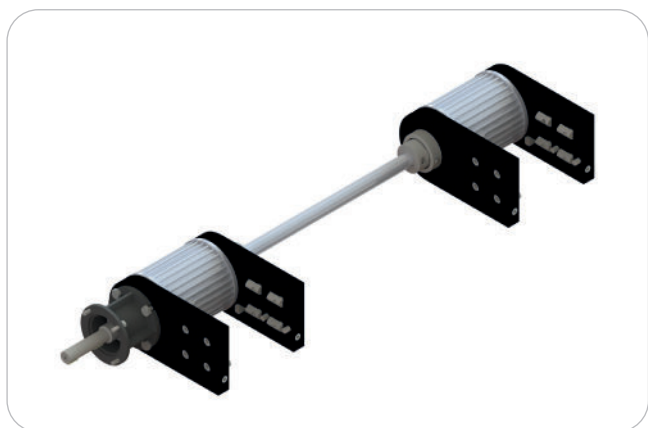
### Belts

Installation tension: 0,1 %

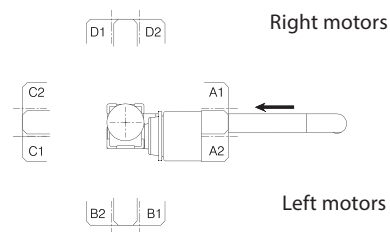
Belt data: Page 104

Permissible loads: see loads data page 11.





Gear motors positions (see page 106)



Product description/Dimensions	Order unit	Reference
Conveyor 90 Double timing belt End drive 40 mm	1 pce	C 0040 80 000
Conveyor 90 Double timing belt End drive 80 mm	1 pce	C 0080 80 000
Conveyor 90 Double timing belt End drive 120 mm	1 pce	C 0120 80 000